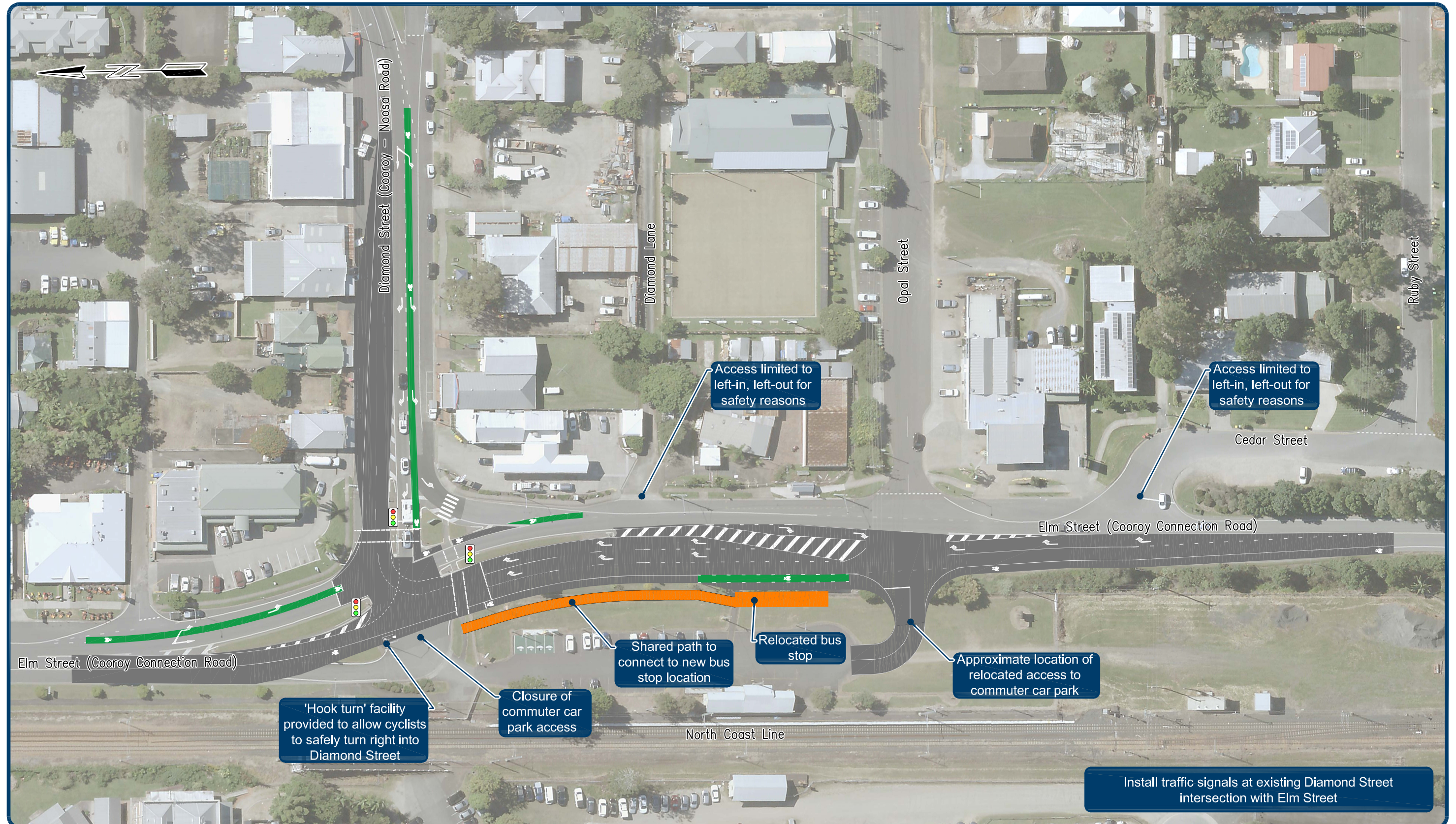


Cooroy intersection improvements - Elm Street and Diamond Street

Preferred planning layout November 2018



The preferred option will involve upgrading the current arrangements by introducing traffic signals to control traffic movements and provide safe signalised crossing opportunities for active transport users. This option provides increased capacity by providing two right turn lanes from Elm Street into Diamond Street and caters for forecast traffic growth well into the future.

LEGEND	
	Cycle lane awareness zone
	Proposed changes to road surface
	Footpath
	Traffic signals



Queensland Government